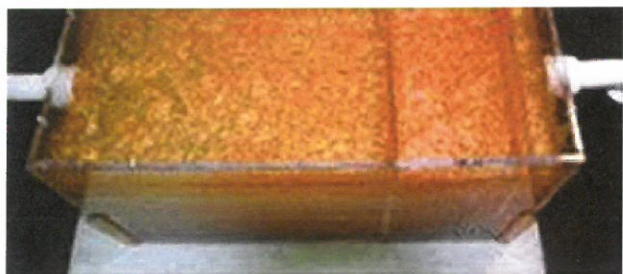




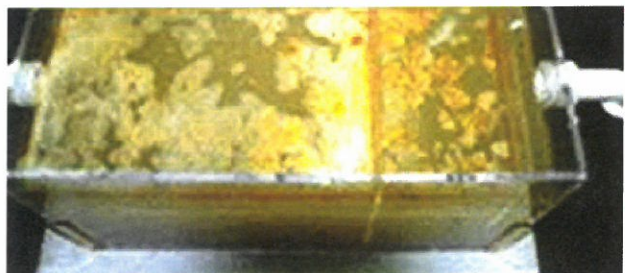
## 1810-ES GREASE DIGESTING BACTERIA

SPECIALTIES FOR MAINTENANCE AND SANITATION SINCE 1947

### NATURAL BIOLOGICAL SOLUTION FOR WASTE



GREASE TRAP SOLIDS BEFORE



NATURAL "DIGESTION" OF SOLIDS AFTER

CONVENIENT, AUTOMATIC,  
ECONOMICAL, DISPENSING



FM 1810-ES GREASE DIGESTING  
BACTERIA WITH FM 9590  
DRAINMASTER PAIL PUMP



PREVENT THIS



AND THIS

**ECO FRIENDLY**—Foremost 1810-ES introduces the latest in environmentally friendly grease trap and drain maintenance.

**NATURAL**—Billions of live, non-pathogenic, accelerated aerobic and anaerobic bacteria digest, liquefy and control odor causing grease and other organic waste by greatly speeding up natural decomposition.

#### VERSATILE—

- Eliminates Grease Problems
- Keeps Drainage Lines Open
- Eliminates Offensive Odors
- Liquefies Sewage Waste Solids
- Keeps Lift Stations Open
- Reduces Scum Blanket

**ECONOMICAL**—Eliminates or minimizes the need for costly, unpleasant grease-trap pumping and snaking of lines.

**SAFE**—Eliminates or greatly reduces the need for highly acidic or caustic drain treatments.

#### RECOMMENDED FOR—

- Restaurants
- Hotels
- Schools
- Municipalities
- Food Processors
- Meat Packers
- Hospitals
- Institutions
- Retirement Homes

Packed in 55 Gallon Drums and Cases of 48 Quarts and 5 Gallon Pails

Rev. 10-14-14

Toll Free: 800-238-5150  
Local: 901-363-4340  
Fax: 901-375-3600

**Delta Foremost Chemical Corp.**  
3915 AIR PARK ST. • P.O. BOX 30310 • MEMPHIS, TENNESSEE 38130-310

Visit our Web Site at:  
[www.deltaforemost.com](http://www.deltaforemost.com)



# TECHNICAL DATA

## FOREMOST 1810-ES GREASE DIGESTING BACTERIA

Rev. 5-3-17

DESCRIPTION:	Foremost 1810-ES Grease Digesting Bacteria is nature in a bottle. A liquid, non-enzyme, hydrogen sulfide reducing bacteria that is 100% active and requires no mixing or extra handling. It reduces the odors of grease traps, septic tanks, drain lines and down pipes through its natural bacterial action. When used correctly, will break down the proteins, greases, fats, and carbohydrates (sugar and starches), and the total suspended solids in the system to the point that they will flow freely. Through its natural bacterial action, FM 1810-ES Grease Digesting Bacteria reduces B.O.D. and C.O.D. by consuming smelly sulfur compounds and organic waste matter. It maintains high treatment levels and produces no sulfuric acid.
APPLICATION:	Recommended for Imhoff plants, grease traps, septic tanks, kitchen drains, drain lines, down lines, garbage grinders, lift stations, wet wells, tile fields, trickling filters, sewage disposal plants, industrial and food processing oxidation and settling ponds, etc.
DIRECTIONS:	<p><b>GREASE TRAPS:</b> For traps less than 20 cubic feet capacity, add 4-5 oz. of product daily by pouring in a sink or pipeline closest to the trap. This should be done at night or when the traps are used the least. After adding, flush down with a cup of lukewarm water. For grease traps larger than 20 cubic feet, add 8-10 oz. daily using the same procedure.</p> <p><b>SEPTIC TANKS:</b> Add 1 pint per 25 cubic feet capacity for the initial treatment. Thereafter, use 8 oz. per week. This should be poured directly into toilet and flushed. If septic tank has become clogged and odorous, add 1 gallon of product directly to the tank through the manhole.</p> <p><b>IMHOFF PLANTS:</b> Treat with an initial charge of 1 gallon at each gas vent. Add as required by local conditions.</p> <p><b>DRAIN LINES AND DOWN PIPES:</b> Use product a minimum of 2 times weekly to a maximum 4 times depending on the usage of the building. Use 4-16 oz. depending on the pipe size 2 times per week. For a 2" pipe use 4 oz. 2 times per week and for 8" pipe use 16 oz. 2 times per week. This product should be used after the use of sulfuric acid type drain openers. (Flush system completely.)</p> <ol style="list-style-type: none"><li>1. For activating the natural digestive processes to prevent future clogging.</li><li>2. As an odor counteractant on hydrogen sulfide fumes created from sulfuric acid.</li></ol> <p><b>Approximate Colony Forming Units (CFU)</b> Viable Bacteria Count = <math>2.2 \times 10^8</math> CFU/gram Viable Spore Count = <math>2.9 \times 10^8</math> CFU/gram</p> <p><b>RATE OF APPLICATION—FOR ALL TREATMENT AREAS LISTED BELOW:</b></p> <ol style="list-style-type: none"><li>1. Induction period, first 3 days add 2 gallons of FM 1810-ES Grease Digesting Bacteria per million gallons of waste or sewage (2ppm).</li><li>2. Maintenance dosage, 1 gallon of material per million gallons of waste or sewage (1ppm). Action requires approximately 30 to 90 days to reach maximum results. Apply required dose daily.</li></ol> <p><b>CALCULATIONS—FOR LAGOONS AND PONDS:</b></p> <ol style="list-style-type: none"><li>1. Volume for initial dose equals length X width X depth X 7.5 = total gallons. One acre foot = 325,000 gallons.</li><li>2. For maintenance dose, use ~ ppm of FM 1810-ES Grease Digesting Bacteria based on influent flow for all applications. Example _ for a flow of 250,000 gallons per day, add one quart of 1810-ES Grease Digesting Bacteria. <b>FOR INDUSTRIAL USE ONLY.</b></li></ol> <p><b>FOR FEED LOTS:</b> Lagoons and oxidation ponds—apply directly to collection pits or pour into water in inlet ditch. Mixes instantly with water and spreads throughout the system.</p> <p><b>FOR INDUSTRIAL AND FOOD PROCESSING OXIDATION AND SETTLING PONDS:</b> Pour bacteria treatment into inlet drain or pour directly into pond at inlet site.</p> <p><b>FOR SEWAGE DISPOSAL PLANTS:</b> Apply at any point in influent stream, settling tank or fitters. Apply directly to lift station tanks for odor control at remote stations. This will carry the FM 1810-ES Grease Digesting Bacteria into the main treatment plant and also extend treatment to the entire system.</p> <p><b>FOR TREATMENT OF THE FOLLOWING ON 24 HOUR BASIS, USE 8 OZ. PER DAY.</b> For the following that is in use less than 24 hours daily, use 8 oz., 4 times a week or every other day: Hospitals, Motels, Hotels, Camps, Pancake Houses, Boat Marinas, Army, Navy and Air Force Barracks, Cafeterias, Schools, Mobile Trailer Parks, Food Processors, Meat Processors, Caterers, in Public Buildings, Military Bases, Churches, etc.</p> <p><b>NOTE:</b> Do not subject product to extremely hot or boiling water, disinfectants or chlorinated dishwashing products.</p>
PRECAUTIONS:	<p><b>KEEP OUT OF REACH OF CHILDREN.</b> Do not take internally. May be harmful if swallowed. May cause eye and skin irritation. Avoid contact with eyes and prolonged contact with skin. Wash thoroughly after handling. <b>FIRST AID:</b> In case of contact with eyes, flush immediately with plenty of water for at least 15 minutes. For skin, flush with plenty of water. Get medical attention if irritation persists. Before using this product, read the Safety Data Sheet (SDS) for more detailed information regarding safe handling.</p>